

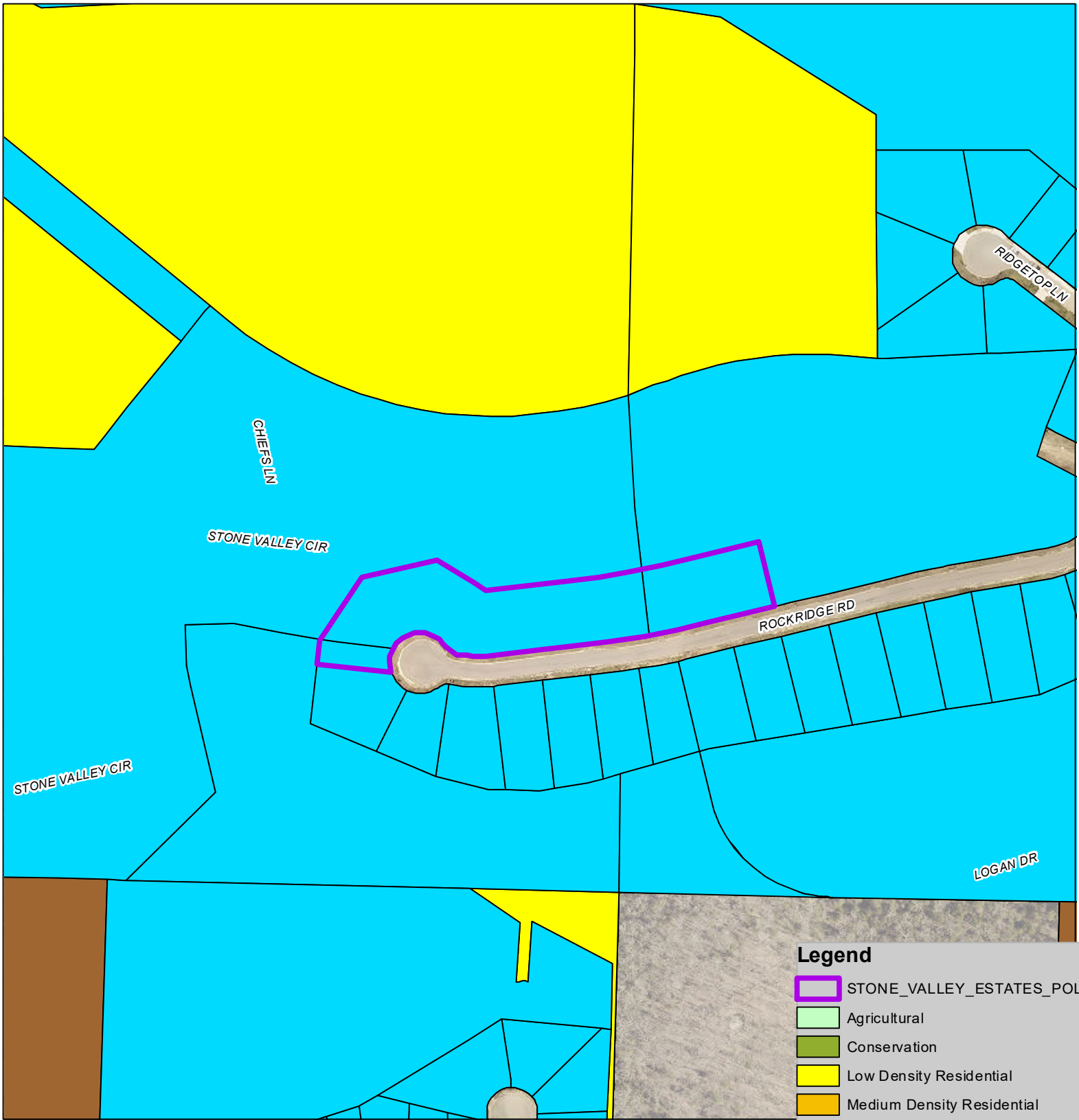
1 inch = 200 feet

City of Branson
Planning & Development
Date: 4/6/2022

(Aerial with Utilities)

Legend

- Sanitary Sewer Manholes
- Liftstation
- Sewer Gravity Mains
- Sewer Pressurized Mains
- Water Hydrants
- Water System Valves
- Water Mains
- DISTRIBUTION
- TRANSMISSION
- STONE_VALLEY_ESTATES_POLY



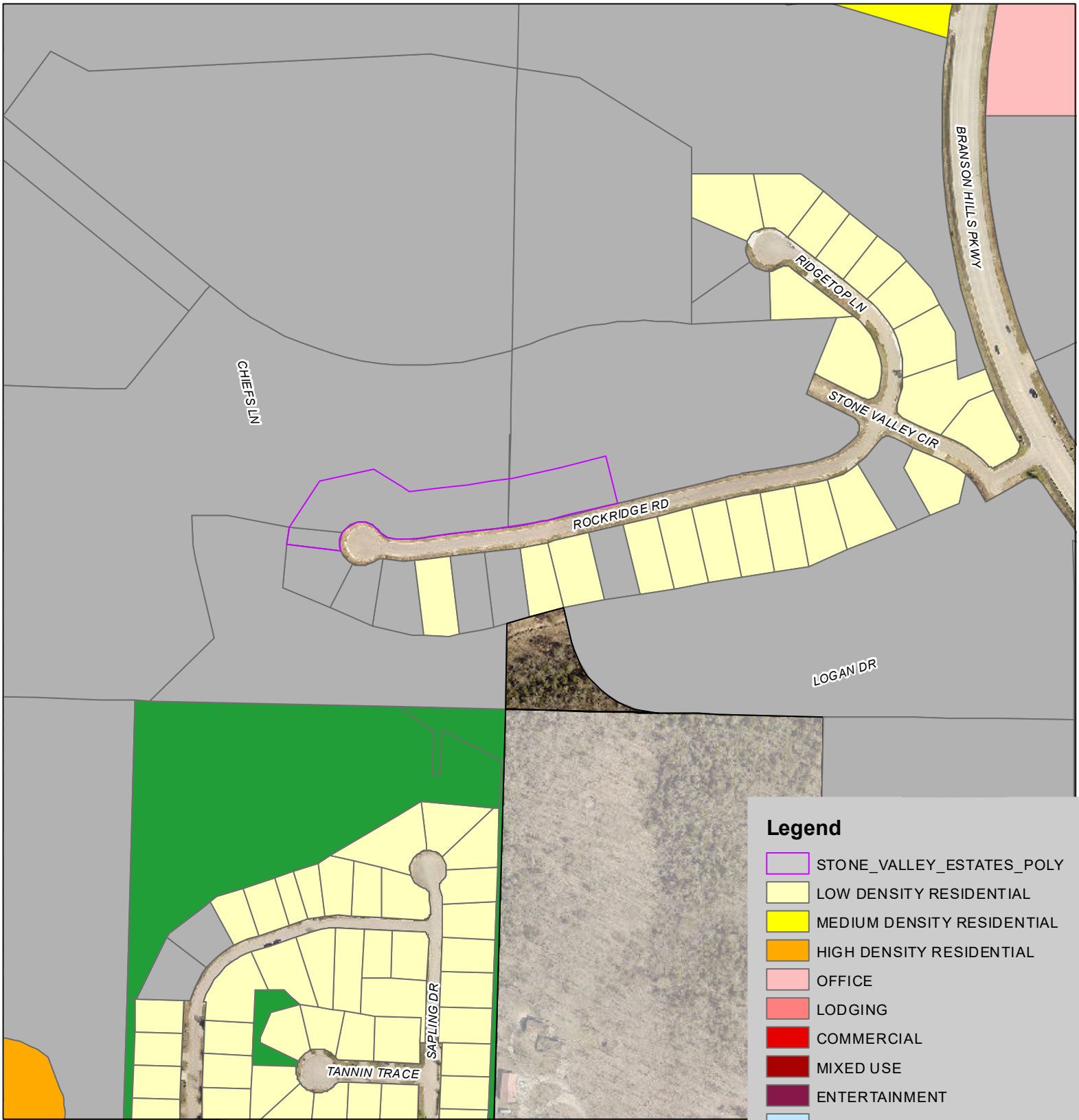
- Legend**
- STONE_VALLEY_ESTATES_POLY
 - Agricultural
 - Conservation
 - Low Density Residential
 - Medium Density Residential
 - High Density Residential
 - Neighborhood Commercial
 - Mixed-Use
 - Community Commercial
 - Downtown
 - Entertainment
 - Business
 - Industrial
 - Planned Development
 - Unzoned



1 inch = 217 feet

City of Branson
Planning & Development
Date: 4/6/2022

(Current Zoning)



Legend

- STONE_VALLEY_ESTATES_POLY
- LOW DENSITY RESIDENTIAL
- MEDIUM DENSITY RESIDENTIAL
- HIGH DENSITY RESIDENTIAL
- OFFICE
- LODGING
- COMMERCIAL
- MIXED USE
- ENTERTAINMENT
- RELIGIOUS ASSEMBLY
- HEALTH CARE
- INSTITUTIONAL
- INDUSTRIAL
- RECREATION
- OPEN SPACE
- AGRICULTURAL
- UTILITIES
- VACANT
- TANEY COUNTY



1 inch = 300 feet

City of Branson
Planning & Development
Date: 4/6/2022

(Existing Land Use)

Orthometric View from the North



Orthometric View from the East



Orthometric Views from the South



Orthometric Views from the West

